

# **PAMA 2025 Research Presentations General Info**



# 2025 Info

## Slide submission info

- ▶ **Format:** Powerpoint. Keynote, or other Mac-only files, must be exported as PowerPoint or PDF files. For other formats contact David Allen [webmaster@artsmed.org](mailto:webmaster@artsmed.org)
- ▶ **Upload to:** <https://pama.memberclicks.net/2025presentation>
- ▶ **Due:** June 20th 11:59PM MT
- ▶ Presentation questions Dorry Allen: [services@artsmed.org](mailto:services@artsmed.org)



# On the day

► **Contact persons:**

- Dorry Allen +1 720 636 4283
- David Allen ([webmaster@artsmed.org](mailto:webmaster@artsmed.org)) +1 303 921 8776 - The sound on his phone will be off during the symposium but people can text if it is urgent.
- Julie Massaro +1 303 808 5643
- Or go to the registration desk to get help.

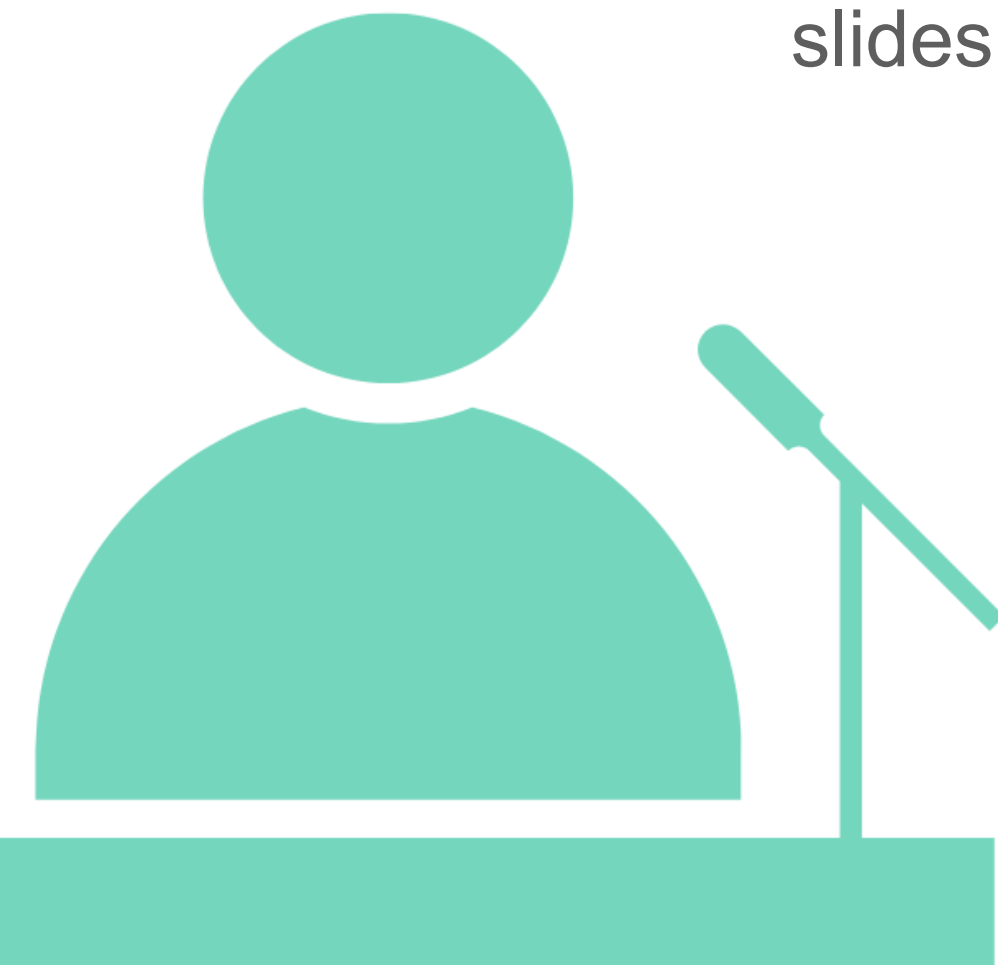
► **For your session:** seat yourself at the front of the lecture room near the podium

- **Technical:** slides will be preloaded to the PAMA laptop. There should be a remote to advance the slides and a microphone on a podium. Bring your notes, slide print out with notes

- Bring water

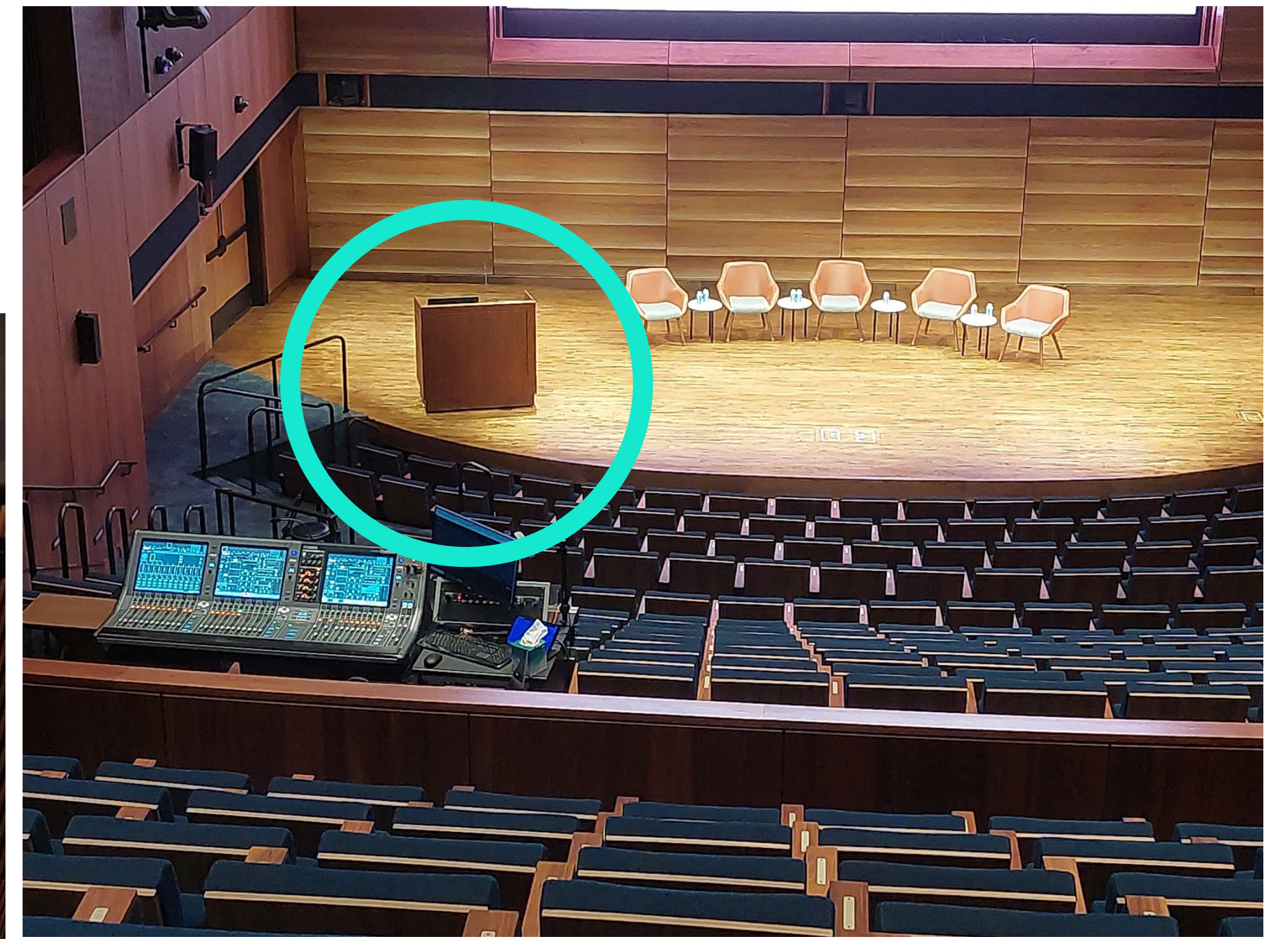
- **Strict running time:** 12 mins presentation followed by 3 mins Q&A

- **Poster parade:** 3 mins





# Plenary 1





# Plenary 2

