



THE GARDENS  
Sonesta ES  
NEW YORK SUITES

LIVE LIKE A  
*local*

THE GARDENS  
Sonesta ES  
NEW YORK SUITES



# The Charm of the Upper East Side

## Residential neighborhood for:

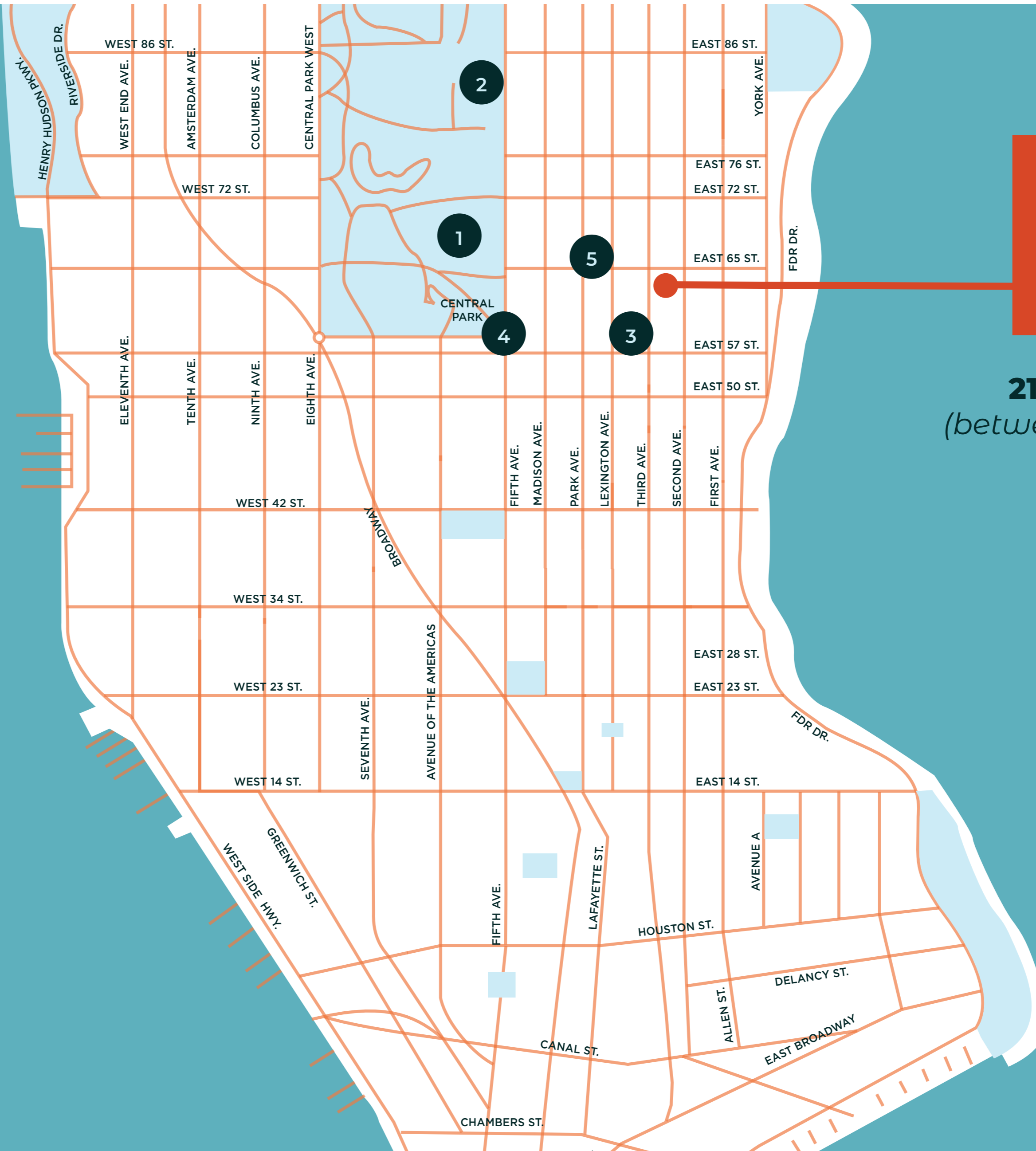
- Art lovers who will enjoy strolling down Museum Mile to visit the MET, MoMA, or the Guggenheim among others
- Fashionistas who love our close proximity to Fifth and Madison Avenues, studded with Manhattan's best boutiques
- Visitors looking for a unique New York City neighborhood experience within walking distance to Central Park and local restaurants
- Sightseeing in the Big Apple with seven nearby subways: F, N, Q, R, W, 4 and 6 trains
- Those seeking world-renowned medical facilities; Manhattan Eye, Ear and Throat Hospital, Memorial Sloan Kettering, Hospital for Special Surgery, and Lenox Hill Hospital





# Nearby Attractions

1. Central Park
2. The MET
3. Bloomingdale's
4. Bergdorf Goodman
5. Park Avenue Armory



**215 East 64th Street**  
*(between 2nd & 3rd Avenues)*  
**New York, NY**  
**10065**

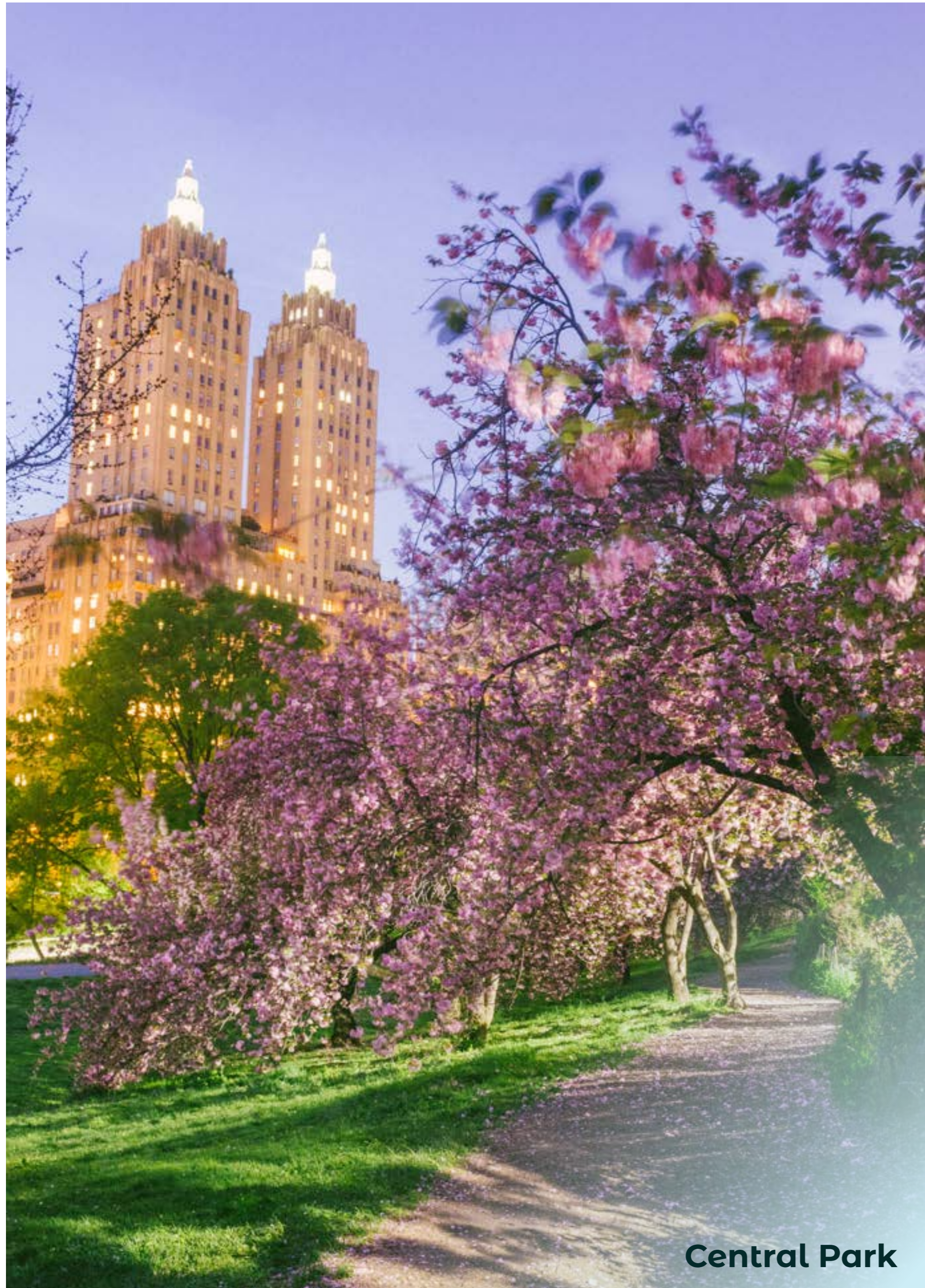


## World-Renowned Medical Facilities:

1. Manhattan Eye, Ear and Throat Hospital
2. Memorial Sloan Kettering
3. Hospital for Special Surgery
4. New York-Presbyterian  
Weill Cornell Medical Center
5. Lenox Hill Hospital







**Central Park**



**Roosevelt Island Tram**



**Bethesda Fountain**



**Brownstones**



# New York City's Suite Spot

The Gardens Sonesta ES Suites New York, offers guests large apartment-style suites in a charming neighborhood on Manhattan's coveted Upper East Side.

## 132 Suites total

- 80 Junior suites, 425 sq. ft.
- 45 One-bedroom apartments, 625 sq. ft.
- 3 Two-bedroom apartments, 1,200 sq. ft.
- 4 Penthouses, 1,000 sq. ft.

## Suites and Apartments feature

- Full kitchens with dishware from Fishs Eddy
- Coffee makers with complimentary coffee
- 55" TV screens
- 180-degree powered recliners
- Select suites available with private terraces and patios
- Six option pillow menu





# Your Home Away From Home

It's already here waiting for you - so unwind and have fun while we pamper you.

- 24-hour Cupboard with snacks and sips
- 24-hour fitness center
- Full kitchens with Fishs Eddy dishware
- FreshDirect grocery delivery service available
- Pets are always welcome and comfortable with our curated program
- In-Room dining from neighborhood favorites
- On-site laundry facilities
- Extended stay rates available
- Valet parking
- Complimentary WiFi





# Wishing You A Speedy Recovery

Located near a number of the country's world-renowned medical facilities, guests will enjoy a restful recovery in our suites following a hospital stay.

- Customizable restful recovery set-ups include ice, extra sheets, extra towels, hospital pillow, and more
- FreshDirect Grocery Delivery Service
- A full kitchen in every room to accommodate special dietary needs
- A curated collection of neighborhood menus for food delivery
- Sleeper sofa in every suite to accommodate guests or caregivers
- Discreet and caring staff
- 180° powered recliners





# Junior Suites

Spacious room accommodations with living area and dining/work space, furnished with sleeper sofa and 180° powered recliner.

- Fully appointed kitchens stocked with Fishs Eddy dishware
- Upgrade to Junior Suite with Garden View
- Average 425 sq. ft.





# One-Bedroom Apartment

Separate living space furnished with sleeper and a 180° power recliner.

- Fully appointed kitchens stocked with Fishs Eddy dishware
- Average 625 sq. ft.





# Two-Bedroom Apartment



The suite includes a main bedroom with a King bed, a second bedroom with two Queen beds, two full bathrooms, living room with dining table, desk, sleeper sofa and 180° recliner.

- Fully appointed kitchens stocked with Fishs Eddy dishware
- Furnished outdoor terrace available in some suites
- Average 1,200 sq. ft.





# Stay On Top Penthouse Suites

Four Penthouse Suites with outdoor spaces.

- Fully appointed kitchens stocked with Fishs Eddy dishware
- Furnished outdoor terrace
- Bathroom with walk-in shower or bathtub
- Average 1,000 sq. ft.

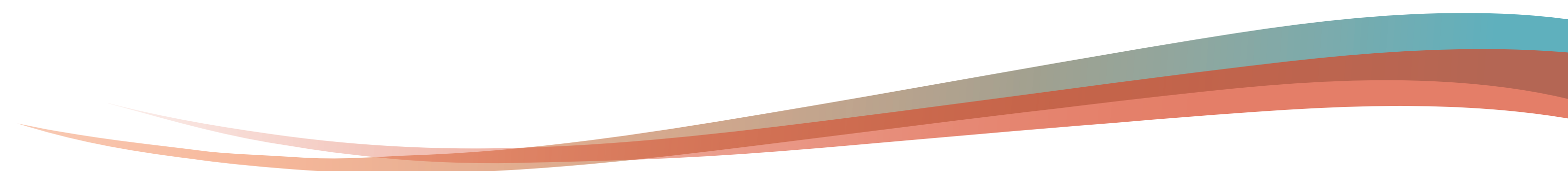
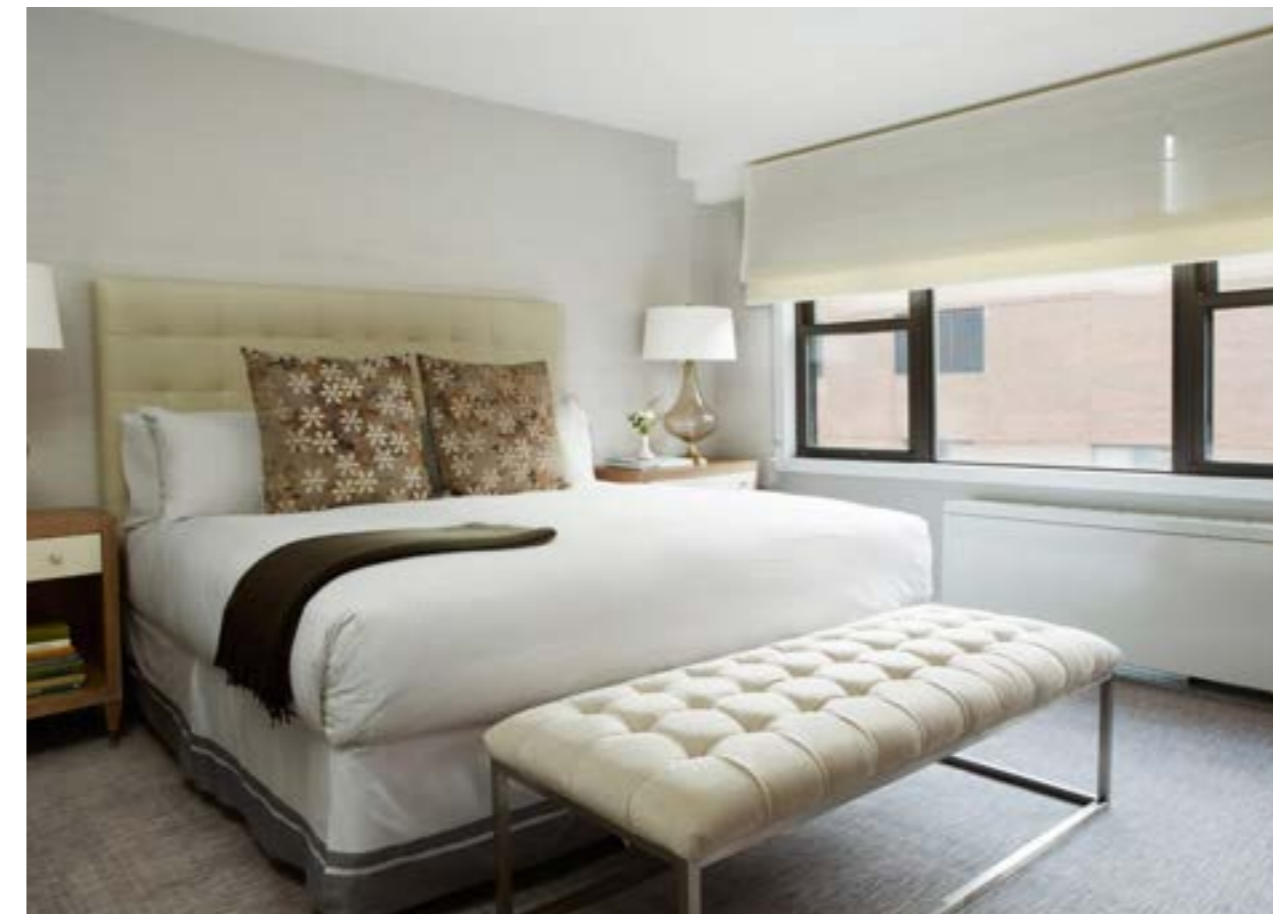




# Penthouse Suites

Four Penthouse Suites with outdoor spaces.

- Fully appointed kitchen
- Furnished outdoor terrace available in some suites
- Bathroom with walk-in shower or bathtub
- Average 1,000 sq. ft.





# Patio & Terrace Suites

Spacious room accommodations with living area and dining/work space, furnished with sleeper sofa and 180° powered recliner.

- Fully appointed kitchens stocked with Fishs Eddy dishware
- Average 425 sq. ft.



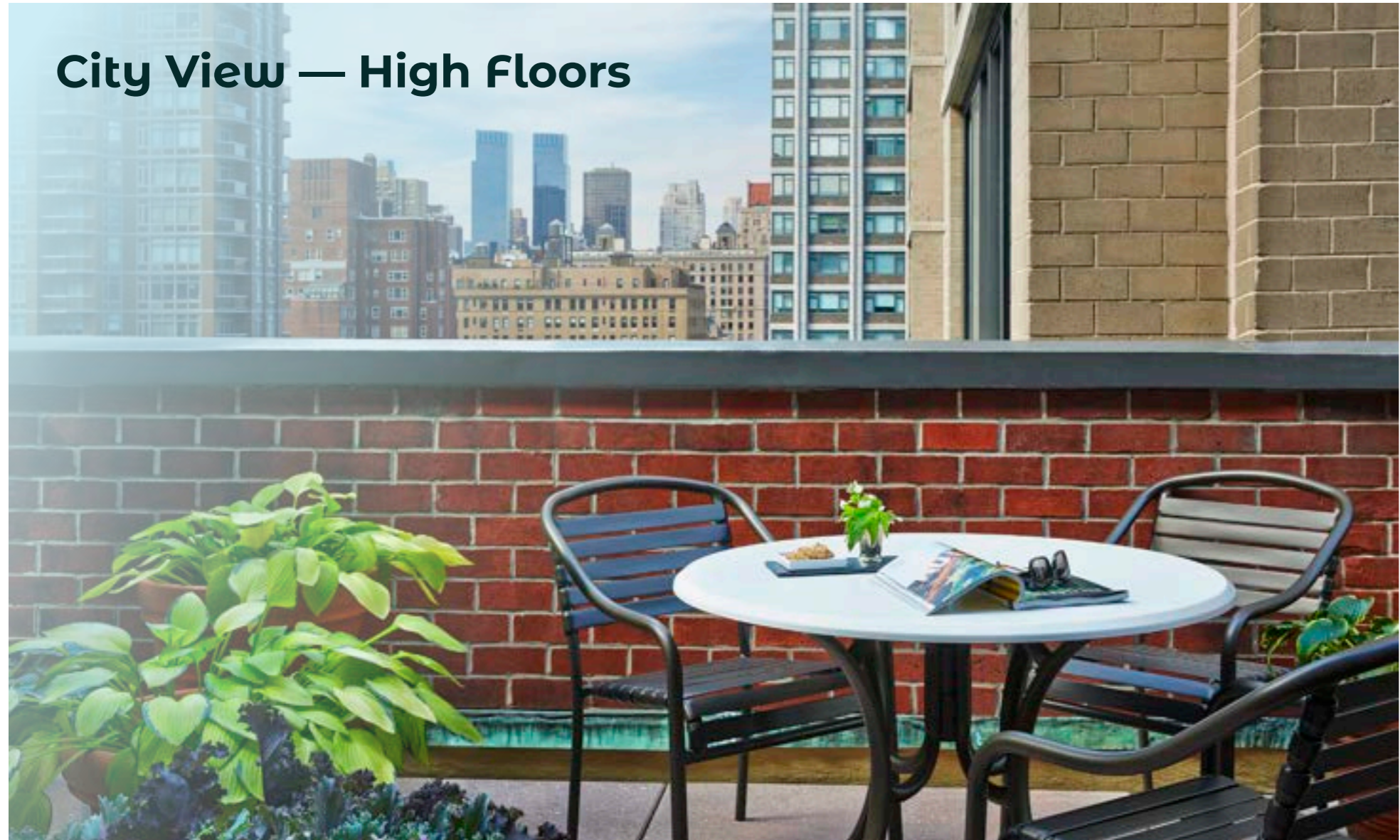




**Spacious Living Rooms**



**Private Patios**



**City View — High Floors**



**Pet Friendly**



**Exclusive Partner Offerings**





**215 East 64th Street**  
*(between 2nd & 3rd Avenues)*  
**New York, NY 10065**  
**212.355.1230**  
**[sonesta.com/nyc](http://sonesta.com/nyc)**

Contact Director of Sales  
[jill.lieblein@sonesta.com](mailto:jill.lieblein@sonesta.com) | 917-767-3992  
GDS Code NY

THE GARDENS  
**Sonesta**   
NEW YORK 



 | SONESTA  
TRAVEL PASS

STAY. REWARDED.

LOYALTY  
HAS ITS  
PERKS

Royal Sonesta San Juan

We now offer Sonesta Travel Pass, a guest rewards program making everything about staying at a hotel easier—and more rewarding. Members receive extra perks, extra points and extra privileges. Enjoy the recognition when you check in and receive our warm, friendly service. Not a member yet? Join today to get access to Sonesta Travel Pass exclusive rates and promotions. It's free and easy—a win-win.



SCAN TO  
ENROLL  
NOW

 | SONESTA

 | SONESTA  
TRAVEL PASS

The  
ROYAL  
SONESTA

THE  
JAMES  
HOTELS

 SONESTA  
HOTELS AND RESORTS

SONESTA  
select

Sonesta ES  
SUITES

SONESTA  
Simply Suites

 SONESTA POSADAS DEL INCA  
PERU

 SONESTA CRUISE COLLECTION  
NILE RIVER